



Products  
Catalogue  
*eva*

*eva*  
PROFESSIONAL  
HAIR CARE

# Professional Use Hair Care Products made in Barcelona. Since 1922.

**94 years** dedicated to the hair cosmetics sector for professionals.

**More than 25,000** professionals around the world place their trust in our products.

**More than 390** products are manufactured in our factory.

In more than **50 countries**, people choose Eva Professional products to care for their hair.

Professional training and marketing programs.

More than **5.000 m<sup>2</sup>** at our facilities are dedicated to research, development and the production of our products.



ENVIRONMENTAL  
SUSTAINABILITY

NATURAL  
INGREDIENTS

NOT TESTED ON  
ANIMALS

*eva*

# Products

---

## Discover our product portfolio

An unlimited number of possibilities for haircare professionals with specific, highly effective active ingredients. You can find the products organized by function.

---

## 1. DIVINA. COLOUR WORLD

|   |    |
|---|----|
| DIVINA.ONE<br>Permanent hair colour with maximum moisturizing power. ....           | 8  |
| DIVINA.PURE<br>Permanent ammonia-free hair colour. ....                             | 18 |
| DIVINA.PURE ACTIVATING CREAM<br>Ammonia-free activating cream for Divina.Pure. .... | 22 |
| DIVINA.Oxi<br>Cream developer for hair colour and bleaching. ....                   | 23 |

## 2. TECHNICS

|   |    |
|---|----|
| SUPERBLANC.blue<br>Multi-technique bleaching powder. .... | 24 |
| EVONDIL<br>Permanent techniques with a-Keratin. ....      | 25 |

## 3. TOP BEAUTY

|  |    |
|--|----|
| E-LINE<br>Specific products for essential hair care. ....                                      | 26 |
| VITAMIN RECHARGE<br>Cutting-edge products with vitamin-enriched "eco hair care" formulas. .... | 30 |
| MYSTIC DIAMOND<br>Line of exclusive oils with diamond powder. ....                             | 32 |

## 4. TREATMENTS

|  |    |
|--|----|
| CAPILLO treatments<br>The latest generation of hair treatments. ....                       | 34 |
| HYDRA.IN by Capilo<br>Treatments for extreme hair rescues, with organic oils. ....         | 38 |
| RITUALITIES<br>Restorative treatment for healthy, shiny, manageable hair for 6 weeks. .... | 40 |

## 5. STYLING AND FINISHING

|  |    |
|--|----|
| EVAJAZZ<br>Professional styling line. .... | 42 |
|--|----|

## 6. SALON SIZE

|  |    |
|--|----|
| HAIRNET<br>Essential products in large sizes for salon use. .... | 44 |
|--|----|

EVA PROFESSIONAL HAIR COLOUR

# Divina.One

## Permanent hair colour with maximum moisturizing power

### Features

---



Active ingredients / formula  
Chroma-tech  
Collagen  
Brazil nut oil\*  
(\*Abyssinian oil in the Divina.One.Diva collection)  
Product: Permanent colouring  
Presentation: 60 ml. tube  
6 units  
Ref.: 00120...

Range includes:  
Divina.One.Essentials  
Divina.One.Mixers  
Divina.One.Super HL  
Divina.One.Plus+  
Divina.One.Diva

**UCS.2**  
TECNOLOGÍA · TECHNOLOGY



### Technology

---

UCS.2 Ultra colour system technology:

1.



2.



3.



1. Maximum colour penetration with Chroma-Tech  
Its boosting action activates the penetration of colour pigments into the cortex for maximum colour injection and complete retention.

2. Maximum colour adhesion  
Collagen for optimal cuticle sealing and total hair protection.

3. Vibrant, longer-lasting colours.  
Brazil nut oil makes the hair silky and shiny.

### Benefits

---

- Advanced formula
- Injection of moisture and colour
- Uniform lightening and controlled oxidation
- Maximum colour penetration and retention
- Maximum grey hair coverage
- Radiant colour results, full of shine
- Optimized colour service in a single visit
- Colours 10% more intense and longer-lasting\*

\*Results corresponding to the comparative test performed with the Chroma-tech formula, after 20 shampoos. Test conducted by an independent laboratory.

## Families and proportions

### DIVINA.ONE Essentials

Essential natural-looking shades and multi-functional use, with perfect grey hair coverage. Provides balanced results between pigmentation and lightening.

| Grey hair  |                                      | No grey hair   |                                      |
|--|--------------------------------------|--|--------------------------------------|
| Divina.One<br>1 Tube<br>60 ml.   | Divina.Oxi<br>20 - 30 vol.<br>60 ml. | Divina.One<br>1 Tube<br>60 ml.   | Divina.Oxi<br>20 - 30 vol.<br>90 ml. |
|  |                                      |  |                                      |
| 1+1  |                                      | 1+1,5  |                                      |
| Processing time: 30-35 min   |                                      | Processing time: 35 min  |                                      |

### DIVINA.ONE Super HL

Super lightening shades full of light. Formulated with maximum lightening power, they give you control and great capacity for neutralizing highlights.

| Dark shades  |                                      | Medium shades  |                                      |
|--|--------------------------------------|--|--------------------------------------|
| Divina.One<br>1 Tube<br>60 ml.   | Divina.Oxi<br>30 - 40 vol.<br>90 ml. | Divina.One<br>1 Tube<br>30 ml.   | Divina.Oxi<br>20 - 30 vol.<br>60 ml. |
|  |                                      |  |                                      |
| 1+1,5  |                                      | 1+2  |                                      |
| Processing time: 40-45 min   |                                      | Processing time: 40 min  |                                      |

### DIVINA.ONE Plus+

The most intense, influential shades. Maximum grey hair coverage and great reactive power for deep, long-lasting colour results.

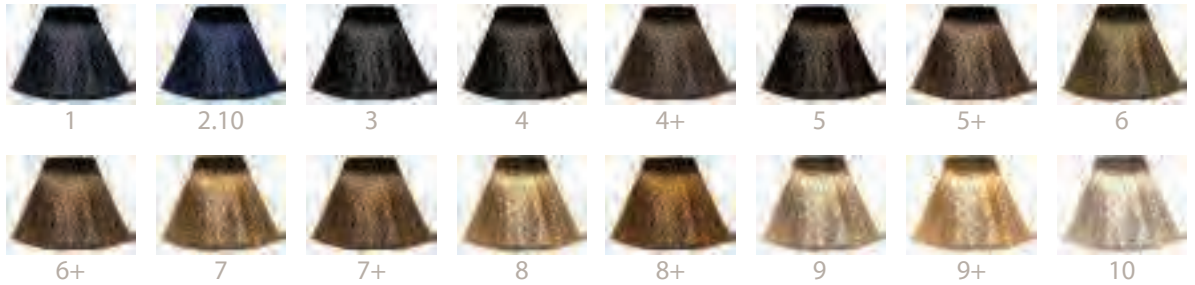
| Grey hair   |                                      | No grey hair  |                                      |
|---|--------------------------------------|---|--------------------------------------|
| Divina.One<br>1 Tube<br>60 ml.  | Divina.Oxi<br>20 - 30 vol.<br>60 ml. | Divina.One<br>1 Tube<br>60 ml.  | Divina.Oxi<br>20 - 30 vol.<br>90 ml. |
|  |                                      |  |                                      |
| 1+1   |                                      | 1+1,5   |                                      |
| Processing time: 30-35 min  |                                      | Processing time: 30-35 min  |                                      |

### MIXERS

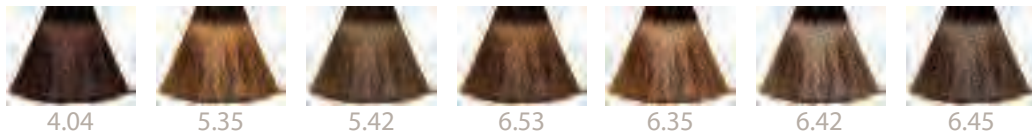
Special and technical shades. Especially designed for fantasy creations, fashion effects or technical situations. Correct, add or personalize a shade.

| Medium shades   |                                      |
|---|--------------------------------------|
| Divina.One<br>1 Tube<br>30 ml.  | Divina.Oxi<br>20 - 30 vol.<br>60 ml. |
|  |                                      |
| 1+2   |                                      |
| Processing time: 5-15 min   |                                      |

### ESSENTIALS NATURAL SHADES



### ESSENTIALS BROWNS



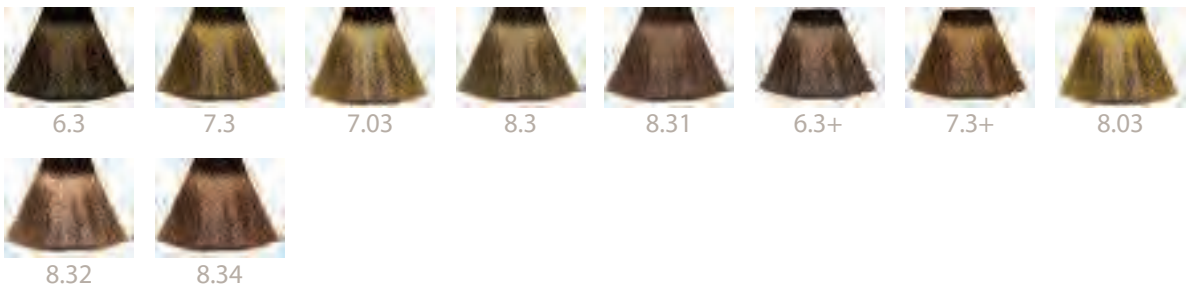
### ESSENTIALS VIOLETS



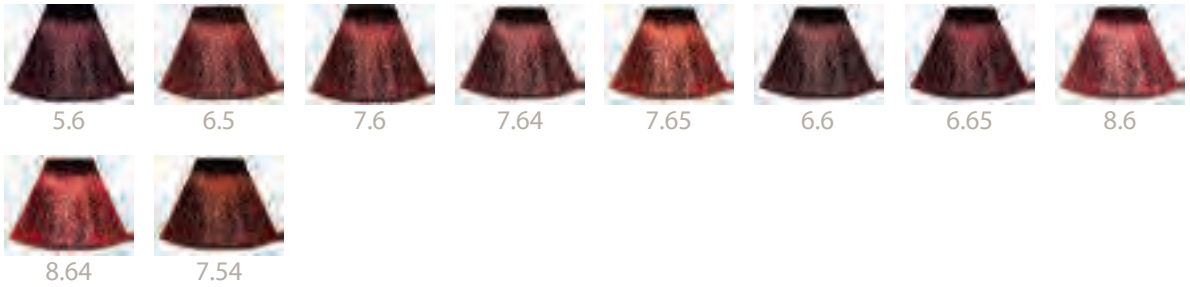
### ESSENTIALS COOL BROWNS



### ESSENTIALS GOLDEN BLONDES



### ESSENTIALS REDS



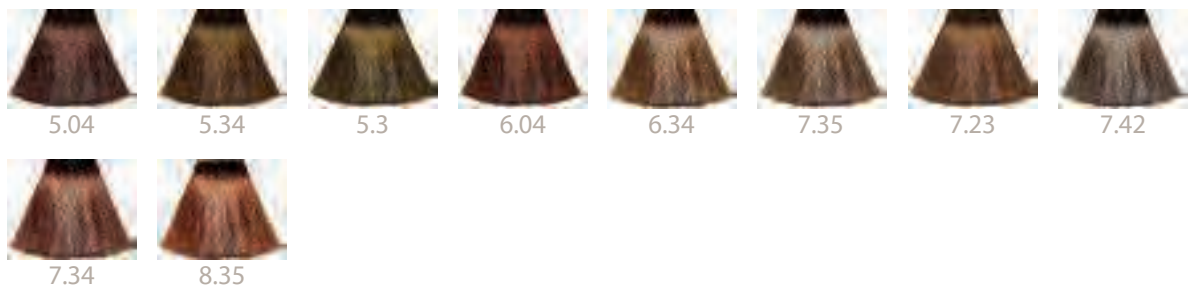
### ESSENTIALS IRIDESCENT ASH SHADES



### ESSENTIALS COPPERS



### ESSENTIALS WARM BROWNS



ESSENTIALS ESSENTIALS EXTRA-LIGHT BLONDES



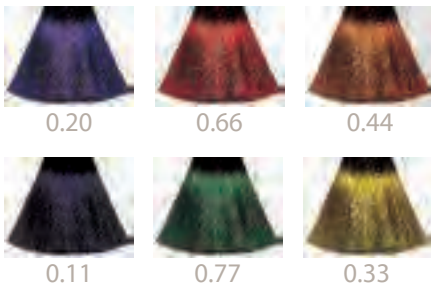
SUPER HL SUPERLIGHTENERS



MIXERS TINTS



MIXERS ENHANCERS



EVA PROFESSIONAL HAIR COLOUR

# 12 Twelve

6 shades of ultra blonde,  
full of light and vitality

Features



The most advanced formula with Chroma-tech, collagen and Brazil nut, and the latest technology: UCS.2

High-intensity colouring with maximum moisturizing power.

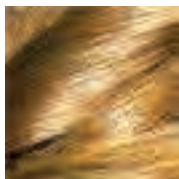
Lightens uniformly and in a controlled manner, with maximum grey air coverage.  
6 level 12 shades.



**UCS.2**  
TECNOLOGIA - TECHNOLOGY



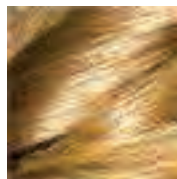
DISCOVER  
12  
DIMENSION



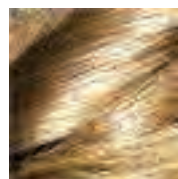
12.0



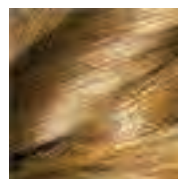
12.1



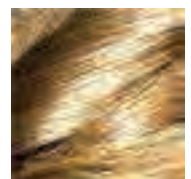
12.07



12.11



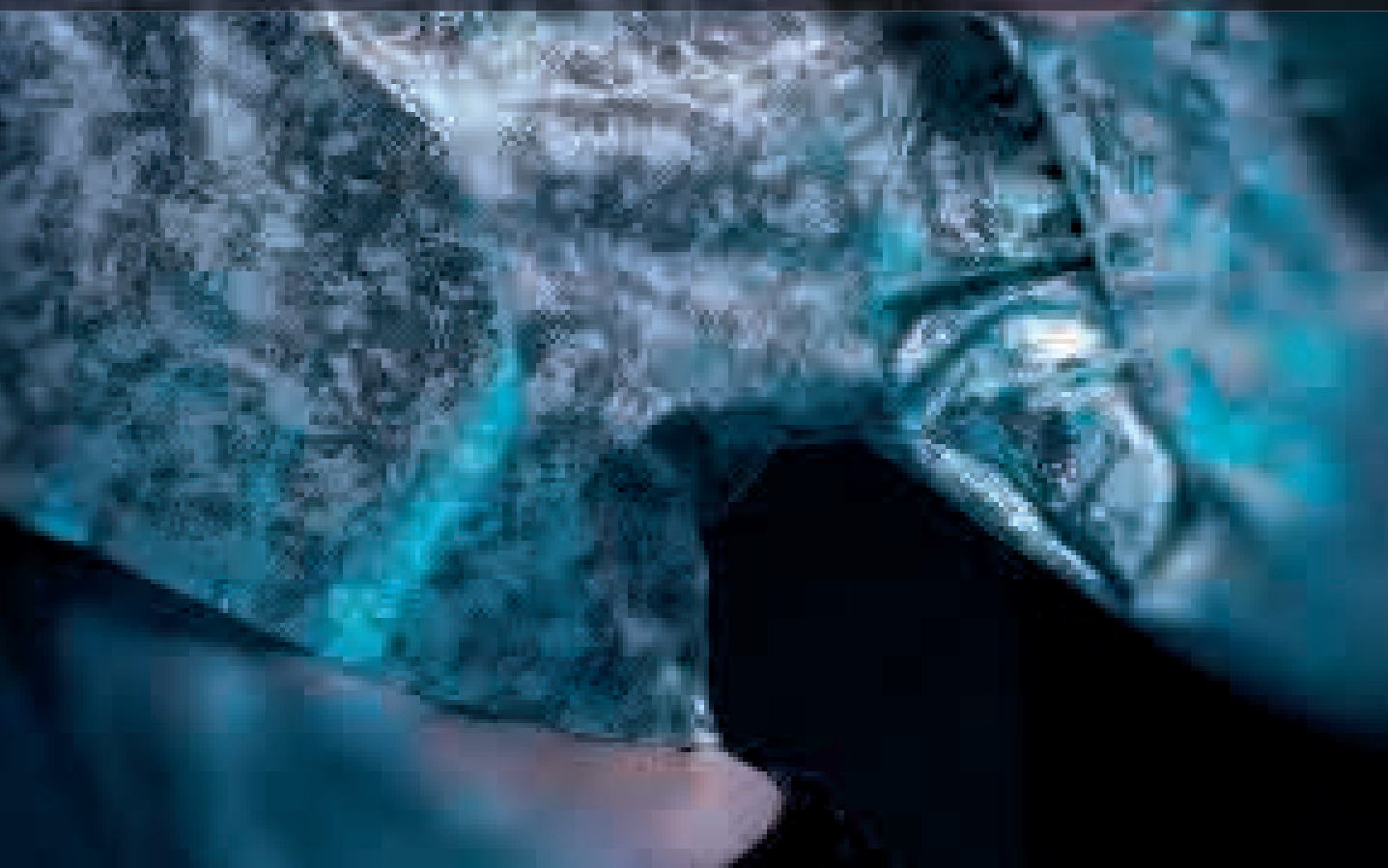
12.16



12.17



DIVINA .one    *NEW ICED EFFECT ASH COLORS*



EVA PROFESSIONAL HAIR COLOUR

# ICED ASH COLLECTION

New fashion highlights with a cocktail of metallic and supernatural shades

Features



..... IDEAL APPLICATION BASES .....

|                  |       | BASE SHADES |   |   |   |   |    |
|------------------|-------|-------------|---|---|---|---|----|
|                  |       | 5           | 6 | 7 | 8 | 9 | 10 |
| ICED ASH COLOURS | 6.11  | ✓           | ✓ | ✓ |   |   |    |
|                  | 8.11  |             |   | ✓ | ✓ | ✓ |    |
|                  | 8.1+  |             |   | ✓ | ✓ | ✓ |    |
|                  | 9.1+  |             |   |   | ✓ | ✓ | ✓  |
|                  | 11.11 |             |   |   | ✓ | ✓ | ✓  |
|                  | 911S  |             |   |   | ✓ | ✓ | ✓  |



**8.1+**



**9.1+**



**6.11**



**8.11**



**11.11**



**911S**

EVA PROFESSIONAL HAIR COLOUR

# Divina.One.Diva

## The new anti-age colouring with super-natural fashion shades

### Features

Anti-aging hair colour that provides 100% coverage, for even the most resistant white hair. Does not require mixing with natural bases. Especially recommended for mature hair that is more than 70% grey.

DIVA  
DIVINA.ONE  
NEW SHADES



#### Main action

Permanent colouring with double highlights and 100% coverage

Technology: UCS.2 ANTI-AGE

Active ingredients / formula:

Chroma-tech

Collagen

Abyssinian oil



#### Benefits:

- 15 soft shades with an extra boost of shine
- UCS.2 ANTI-AGE Technology
- Additional care for mature hair
- 100% coverage. No need to mix with base shades
- Standard lightening power: 2-3 shades\* (\*on natural hair)

Presentation: 60 ml. tube.

6 units

Ref.: 00128...



### Technology

#### UCS.2 Ultra colour system technology

1.



2.



3.



#### 1. Chroma-tech

Maximum colour penetration. Its boosting action activates the penetration of colour to the cortex for maximum colour injection and full retention.

#### 2. Collagen

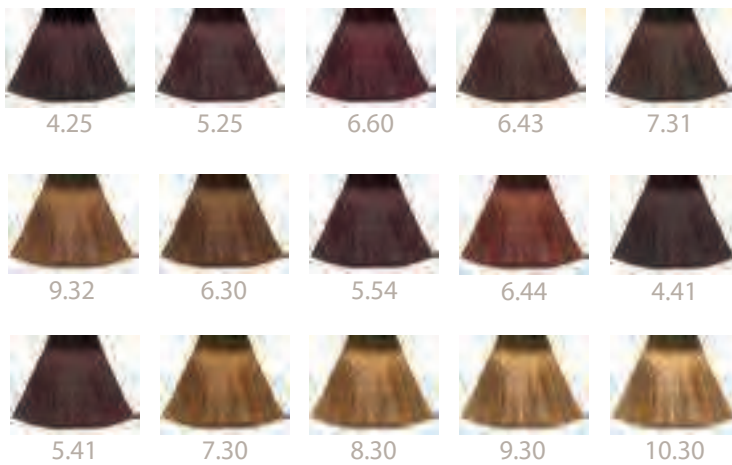
Maximum colour adhesion. For optimal cuticle sealing and total hair protection.

#### 3. Abyssinian Oil

Fights the signs of aging of the hair, making it soft and shiny. Strengthens the fibre, boosting elasticity and density x2 (\*).

(\*) Test comparing it to a product without a specific formula.

Colours and Proportions



Mixing

Divina.One  
1 Tube  
60 ml.

Divina.Oxi  
20 - 30 vol.  
90 ml.

1+1,5

Processing time: 30-35 min

Complement



Divina.Oxi  
Cream developer. Designed to perfectly develop the entire Divina.One colour range, with optimal colour evening capacity.  
4 volumes available for the best professional results.



EVA PROFESSIONAL HAIR COLOUR

# Divina.Pure


## Simply natural, totally professional

### Features

---



**Main action**  
Permanent, ammonia-free hair colour  
**Technology:** ÓLEO-K-RICH Technology  
**Active ingredients / formula:**  
Ammonia-free  
Fragrance-free  
Paraben-free  
Silicone-free  
**Presentation:** 60 ml. tube.

 6 units  
Ref.: 00121...



AMMONIA-FREE hair colour with intensive treatment properties. Respects hair and the environment.



### Technology

---

Divina.Pure has been enriched with Oleo-K-Rich, a new active complex that acts deep-down, thanks to the treatment action of its ingredients:



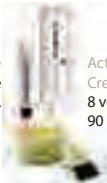

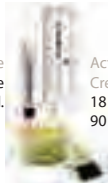

**OLEO-K-RICH: The secret of its formula**  
KERATING + SILK  
+ BRAZIL NUT OIL

### Benefits

---

- Strengthens and protects the hair.
- Pigments that penetrate the hair fibre and boost the colour action.
- Antioxidant, moisturizing and nutritional properties.
- Rebuilds mistreated hair.
- 3-shade lightening capacity.
- Maximum grey hair coverage.
- Maximum comfort

## Proportions Chart

| 8 vol.<br>2,4%   | 18 vol.<br>5,4%   | 18 vol.<br>5,4%   | 28 vol.<br>8,4%   |
|--|---|---|---|
| NO GREY HAIR   | GREY HAIR   | NO GREY HAIR  | NO GREY HAIR  |
|  <p>Divina.Pure<br/>1 Tube<br/>60 ml.</p> <p>Activating<br/>Cream<br/>8 vol.<br/>90 ml.</p> |  <p>Divina.Pure<br/>1 Tube<br/>60 ml.</p> <p>Activating<br/>Cream<br/>18 vol.<br/>60 ml.</p> |  <p>Divina.Pure<br/>1 Tube<br/>60 ml.</p> <p>Activating<br/>Cream<br/>18 vol.<br/>90 ml.</p> |  <p>Divina.Pure<br/>1 Tube<br/>60 ml.</p> <p>Activating<br/>Cream<br/>28 vol.<br/>90 ml.</p> |
| 1+1,5  | 1+1   | 1+1,5   | 1+1,5   |
| Processing time without heat: 35 min   | Processing time without heat: 35 min  | Processing time without heat: 35 min  | Processing time without heat: 35 min  |
| Processing time with heat: 20 min  | Processing time with heat: 20 min   | Processing time with heat: 20 min   | Processing time with heat: 20 min   |

### APPLICATION OF HIGHLIGHT SHADES IN COLOUR-TREATED GREY HAIR:

When working with highlight colours, the best coverage is achieved by mixing 3/4 of the highlight colour with 1/4 of the natural colour. For example: 3/4 DIVINA.PURE 6. 23 + 1/4 DIVINA.PURE 5+

IDEAL APPLICATION BASES

|                   | BASE SHADES  |                  |                   |                    |               | MAXIMUM COVERAGE IN:   |
|-------------------|--------------|------------------|-------------------|--------------------|---------------|--|
|                   | 10           | 7                | 5                 | 4                  | 3             |  |
|                   | Light blonde | Medium blonde    | Light chestnut    | Medium chestnut    | Dark chestnut | Hair that is more than 50% grey  |
| Cool browns       |              | 5,02 / 5,13      | 4,02 / 5,02 / 5,1 | 3,02 / 4,02 / 5,02 | 3,02 / 4,02   | The best coverage is achieved by mixing 3/4 of the highlight colour with 1/4 of the natural colour.<br><br>For example: 3/4 DIVINA PURE 6.23 + 1/4 Divina Pure 5+. |
| Warm browns       |              | 6,23 / 7,21 / 7+ | 6,23 / 7,21       | 6,23               |               |  |
| Coppers           |              | 5,4              | 5,4 / 6,40        | 5,4 / 6,40         |               |  |
| Violets           |              |                  | 4,20 / 5,20       | 4,20 / 5,20        | 4,20          |  |
| Reds              |              |                  | 5,6 / 6,6         | 5,6 / 6,6          |               |  |
| Ashes             | 8,1          | 6,1 / 7,1 / 8,1  | 5,1 / 6,1         | 5,1                |               |  |
| Light ash blondes | 9,12 / 9,01  |                  |                   |                    |               |  |
| Black             |              |                  |                   | 1 / 1+             | 1 / 1+        |  |
| Dark chestnut     |              |                  | 4                 | 4                  | 4             |  |
| Chestnut          |              | 5 / 5+           | 5 / 5+            | 4 / 5 / 5+         |               |  |
| Dark blonde       |              | 6                | 6                 |                    |               |  |
| Blonde            |              | 7 / 7+           | 7 / 7+            |                    |               |  |
| Light blonde      | 8            | 8                |                   |                    |               |  |
| Very light blonde | 9            | 9                |                   |                    |               |  |

18 vol. 5,4%

NATURAL SHADES



COPPERS



WARM BROWNS



COOL BROWNS



ASH SHADES



VIOLETS



REDS



LIGHT ASH BLONDE SHADES



COLOUR

## Divina.Pure activating cream

Especially formulated for developing Divina.Pure colour. The end result will be deep, radiant colour and maximum durability.

The use of this colour activator is absolutely necessary to boost the coordinated action of the active ingredients in its formula.

Active ingredients / formula

Stabilizing agents that guarantee uniform, long-lasting colours.

Product: Colour activating cream.

3 Volumes: 8V / 18V / 28V

Presentation: 1L. / 100 ml. bottle

1L bottle 📦2 units // Refs:

( 8 vol. / 2,4% 00152102 ) ( 18 vol. / 5,8% 00152103 ) ( 28 vol. / 8,4% 00152104 )

100 ml. bottle 📦8 units // Refs:

( 8 vol. / 2,4% 00152001 ) ( 18 vol. / 5,8% 00152002 ) ( 28 vol. / 8,4% 00152003 )

Benefits

Deep, radiant colours Silky

Shiny hair

Results with maximum durability

### 8V

Desired effect: Tone on tone / Extra radiance and shine / No lift.

Especially recommended for: Thin, sensitive scalps.

Not recommended for: Very grey hair

### 18V

Desired effect: 2 levels of lightening

Especially recommended for: Very grey hair

### 28V

Desired effect: 3 levels of lightening

Especially recommended for: Application of light shades

Not recommended for: Thin, sensitive scalps.



COLOUR

# Divina.Oxi cream

Cream developer for capillary colour and bleaching. The perfect complement for the best colouring results.

Active ingredients / formula

The softeners included in its formula provide a treatment effect for the scalp and extra softness for the hair.

Product: Cream developer.

4 Volumes: 10V / 20V / 30V / 40V

Presentation: 1L. / 100 ml. bottle

1L bottle 📦2 units // Refs:

( 10 vol. / 3% 00151004 ) ( 20 vol. / 6% 00151003 ) ( 30 vol. / 9% 00151002 ) ( 40 vol. / 12% 00151001 )

100 ml. bottle 📦08 units // Refs:

( 10 vol. / 3% 00151104 ) ( 20 vol. / 6% 00151103 ) ( 30 vol. / 9% 00151102 ) ( 40 vol. / 12% 00151101 )

Benefits

With optimal colour evening capacity.

Maximum durability.

Perfectly stable, it maintains its concentration in volume over time.

## 10V

Balanced oxidizer for low-oxidation reactions. Tinting and fantasy highlights.

## 20V

The perfect balance for an even colour reaction between grey hair and natural pigmentation. Evens out tones.

## 30V

The perfect lightener for grey-free hair. Intense highlight colour.

## 40V

Intensifies lightening. Ideal for super-highlights and bleaching.



DIVINA COMPLEMENT

# Divina Skin Protector

## Anti-stain oil.

Say goodbye to dye stains! Good prevention marks the difference in the service and is a sign of professionalism.

2-in-1 protective oil. Protects the skin and removes dye stains.

Product: Protective oil for hair dyes.

Presentation: 125 ml. bottle  units (Ref: 01289131)



EVA PROFESSIONAL TECHNICAL PRODUCTS

# Superblanc.Blue

## Multi-technique bleaching powder for progressive lightening.

Features

Benefits

Product: Blue bleaching powder

Presentation:

500 g. jar  2 units Ref. 00101005

500 g. sachet  4 units Ref. 00101007

Box of 12 - 50 g. sachets  units Ref. 00101003

- More than 4 shades of lightening power
- Greater control during the lightening process
- Acts efficiently, effectively and quickly.
- Non-volatile powder

PERFECT BLEACHING FOR  
HIGHLIGHT OR DECAPAGE  
TECHNIQUES



EVA PROFESSIONAL TECHNICAL PRODUCTS

# Evondil

## 3 innovative products that will make perms a simple, comfortable process.

### EVONDIL QUATERNUM PERMANENT WAVE.

An innovative concept in permanents that acts specifically on each hair type. The result is homogeneous curls from the roots to the ends. It gives the hair volume, shine and softness, without interfering with its natural properties.

Active ingredients / formula: a-Keratin

Selection: 4 varieties available, depending on the hair type:

0 STRONG: Strong hair // 1 NORMAL: Normal hair // 2 GENTLE: Dyed or bleached hair // 3 VERY GENTLE: Very sensitive or highlighted hair.

Product: Permanent

Presentation:

125 ml. bottle  4 units // Refs:

(Evondil Quaternium "0" 00106200) (Evondil Quaternium "1" 00106201) (Evondil Quaternium "2" 00106202) (Evondil Quaternium "3" 00106203)

600 ml. bottle  units // Refs:


(Evondil Quaternium "0" 00106300) (Evondil Quaternium "1" 00106301) (Evondil Quaternium "2" 00106302) (Evondil Quaternium "3" 00106303)

### EVONDIL QUATERNUM NEUTRALIZER

The neutralizer that is perfect to use with an Evondil permanent. Besides performing its function, it has a softening and repairing effect on the hair, while fixing and prolonging the duration of the curl.

Product: Neutralizer

Presentation:

1L. bottle  2 units (Ref: 00111101)

125 ml. bottle  4 units (Ref: 00111103)

### EVONDIL QUATERNUM PROTECT.

This protective gel is especially formulated for dry, porous and especially sensitive hair. It hydrates and protects the cuticle, reducing alkaline alterations during the waving process.

Product: Protective gel with proteins

Presentation:

15 ml. tubes  2 units (Ref: 00149000)



TOP BEAUTY

# E-line

## Professional products made with passion

---

NEW  
FORMULAS  
WITH NATURAL  
EXTRACTS

With products for all hair types, e-line helps you show off healthy, shiny hair. Its formula, based on natural extracts, will give your hair an extra boost of vitamins and nutrients.

### Main action

Daily hair care with high-quality products

### Benefits

Keeps your hair and scalp in perfect condition

### Active ingredients

Shikakai, Gogi, Keratin, Silk, Wheat Germ, Water Lily, Bamboo, Lotus Flower, Avocado, Oleo Complex and Provitamin B5.

All these nutrients are available in different products on the line, to care for your hair from the inside.

MINI-SIZES (60 ml.) AVAILABLE.  
ASK YOUR SALES REPRESENTATIVE.

---

## INTENSE COLOUR

Protection and vitality of infinite colour.

Technical range with a pH of 4.5 to trap the colour pigments deep down.

### Goji and Shikakai extracts

Its antioxidant, scalp-stimulating and ayurvedic properties make shikakai a necessary ally to protect your hair colour, making it last longer.

Colour Shampoo (especially for colour-treated hair) 300 ml. 12 (00180000)

Colour Shampoo Prof. (especially for colour-treated hair pH 4,5) 1000 ml.

6 (00180020)

Grey Shampoo (especially for grey hair) 300 ml. 12 (00180007)

Grey Shampoo Prof. (especially for grey hair) 1000 ml. 6 (00180027)

Blonde Shampoo (especially for blonde hair) 300 ml. 12 (00180008)

Blonde Shampoo Prof. (especially for blonde hair) 1000 ml. 6 (00180028)

Colour Conditioner (especially for colour-treated hair) 200 ml. 12 (00180109)

Colour Conditioner Prof. (especially for colour-treated hair) 1000 ml.

6 (00180108)

Fix Colour (treatment conditioner for colour-treated hair) 200 ml.

2 (00180102)



## ULTRA REPAIR

### Deep down repair and shine

#### Oleo Complex:

Formula rich in avocado, safflower and jojoba oils; intended to brighten, hydrate, protect and repair the hair fibre.

Repair Shampoo (especially for nutrition) 300 ml. 12 (☎)0180005)  
 Repair Shampoo Prof. (especially for nutrition) 1000 ml. 6 (☎)0180025)  
 Repair Mask (nourishing mask) 300 ml. 6 (☎)0180100)  
 Repair Mask Prof. (nourishing mask) 1000 ml. 6 (☎)0180101)  
 @22 (no-rinse conditioner) 200 ml. 1 (☎)00180105)



## CARE

### Specific treatment and care protecting against hair loss, dandruff and oily hair.

**LOTUS FLOWER EXTRACT:** With soothing and toning properties that relax the activity of the sebaceous glands.

**WATER LILY EXTRACT:** With excellent anti-inflammatory, antibacterial, hydrating and toning properties, ideal for fighting dandruff.

**BAMBOO EXTRACT:** Regenerates and tones scalp skin cells, helping to stimulate hair growth.

Formulas combined with **GINSENG EXTRACT** for an extra boost of energy.

Fresh Shampoo (anti-oil regulator) 300 ml. 12 (☎)0180002)  
 Fresh Shampoo Prof. (anti-oil regulator) 1000 ml. 6 (☎)180022)  
 CSP Shampoo (anti-dandruff regulator) 300 ml. 12 (☎)0180001)  
 CSP Shampoo prof. (anti-dandruff regulator) 1000 ml. 6 (☎)180021)  
 HL Shampoo (energizing anti-hair loss) 300 ml. 12 (☎)0180006)  
 HL Shampoo Prof. (energizing anti-hair loss) 1000 ml. 6 (☎)180026)  
 HL Lotion (energizing anti-hair loss) 100 ml. 6 (☎)180106)



## CONTROL

Manageable straight and well-defined curly hair with total freedom of movement.

### Silk and Wheat Germ Proteins

They act on the hair, protecting it from external aggressions, repairing and conditioning it while increasing its elasticity.

Control Shampoo (especially for straight and curly hair) 300 ml. 12 (00180003)

Ultra-Rizzi (curl-boosting mousse) 200 ml. 12 (00180107)

Ends Treatment (anti-frizz treatment serum) 50 ml. 6 (00180103)

Control Liss Cream (especially for straight and curly hair) 200 ml. 12 (00180104)



Total anti-frizz control formula

## VERSATILE

Softness, pampering and functionality for daily hair care.

### Avocado oil and Provitamin B5

High vitamin content for strong skin protection. Their combination helps reconstruct and structure the capillary fibre, establishing a correct level of nutrition, elasticity and shine.

2 in 1 Shampoo (normal hair) 300 ml. 12 (00180004)



2-in-1 formula for normal hair

## SUN

The ultimate in sun protection.

E-line Sun offers you the complete treatment to protect your hair and help it recover during and after sun exposure.

### UVA-B FILTERS

Their job is to protect the hair from free radicals and sunlight.

### MACADAMIA NUT OIL AND EXTRACT

Macadamia nut oil and extract fight against aging by counteracting cellular oxidation, promoting healthy hair.

### ALOE VERA EXTRACT

A powerful hair care ingredient, aloe vera makes hair soft and shiny and gives it body.

Sun Shampoo (after-sun repair shampoo) 250 ml. 12 (00180110)

Sun Protector Oil (UVA-B protection oil) 250 ml. 12 (00180111)





# Vitamin Recharge

## Where each product becomes an experience

### Vitamin Recharge “The Original”

---

Gently cleanses the hair and helps regulate even dry, irritated scalps. The answer to the eternal need for hair full of energy, strength and magnificent shine.

Moisturizing is its key.

Product: Vitamin-rich cleansing balm (The evolution of shampoo)

Active ingredients

Multi-vitamin complex

Biotin


Panthenol

Olive oil

Formula

Sulphate-free / Paraben-free / Silicone-free / Allergen-free / No artificial colours / Alcohol-free / Phthalate-free / No polycyclic musks

Presentation:

500 ml. bottle // 00107203 // 1 

100 ml. bottle // 00170204 // Consult your sales representative



### Vitamin Recharge “Orange”

---

Gently cleanses the hair and helps regulate even oily scalps. The answer to the eternal need for hair full of energy, strength and magnificent shine.

Volume is its key.

Product: Vitamin-rich cleansing balm (The evolution of shampoo)

Active ingredients

Multi-vitamin complex

Biotin


Panthenol

Bitter orange extract

Formula

Sulphate-free / Paraben-free / Silicone-free / Allergen-free / No artificial colours / Alcohol-free / Phthalate-free / No polycyclic musks

Presentation:

500 ml. bottle // 00170207 // 1 

100 ml. bottle // 00170208 // Consult your sales representative



## Vitamin Recharge "Beach"

Provides natural body and volume.

Have that beach feeling wherever you go. Texturizer to create surfer waves and hippie looks.

Product: Sea Salt Hair Spray

Active ingredients

Multi-vitamin complex

Biotin

Panthenol

Sea Salt Formula

Formula

Sulphate-free / Paraben-free / Silicone-free / Allergen-free / No artificial colours / Alcohol-free / Phthalate-free / No polycyclic musks

Presentation:

250 ml. bottle // 00170211 // 12



## Vitamin Recharge "Oh Là Là"

An unparalleled experience that pampers the hair fibre.

The combination of vitamins and marine algae complete a treatment inspired by thalassotherapy.

Product: Multi-action Jelly

Active ingredients

Multi-vitamin complex

Biotin

Panthenol

Sea Algae Formula

Formula

Sulphate-free / Paraben-free / Silicone-free / Allergen-free / No artificial colours / Alcohol-free / Phthalate-free / No polycyclic musks

Presentation: 250 ml. bottle // 00170212 // 12

Benefits: Hydrates / Detangles / Disciplines / Controls / Repairs / Protects / Rebuilds

Provides: body / volume / softness / silkiness / shine

Action: Anti-breakage / Anti-frizzing / Anti-pollution



TOP BEAUTY

# Mystic Diamond

Beauty secret for your hair

The only hair elixir formulated with diamond powder

---



## ARGAN MYSTIC DIAMOND

Beauty and shine elixir

New concentrated formula with 5% Argan oil and diamond powder for all hair types.

Presentation: 50 ml. vial  units. (Ref.: 00168204)

---

### Benefits

Protection, vitality and shine: the keys to beautiful hair.

**INCOMPARABLE NUTRITION:** Regenerates damaged, fragile hair.

**MOISTURIZING ACTION:** Prevents frizzing, making hair soft.

**MAGNIFICENT SHINE:** Provides the hair an extra boost of instant shine.

### Luxurious ingredients

**DIAMOND:** diamond powder will make your hair shinier than you've ever imagined. Instant effect.

**ARGAN OIL:** argan oil, extracted from the fruit of the Argania spinosa tree, is rich in vitamin E, whose main action is to protect, moisturize and revitalize the hair, making it lighter and softer.

### How to use:

Pour a small amount of MYSTIC DIAMOND elixir in the palm of your hand and spread evenly throughout the hair, concentrating on the mid-sections and ends.


### Versatility of use

Apply to damp hair (medium-length hair, 3-5 pumps). Once the hair is dry, give it the final touch it needs with a last few drops of Mystic Diamond (1-2 pumps). Use as part of a daily moisturizing ritual for dry hair. The amount applied will depend on the length and thickness of the hair.

---



## ABYSSINIAN MYSTIC DIAMOND

Densifying elixir  
 New lightweight formula in spray form  
 Abyssinian oil and diamond powder  
 For mature, dull and/or stressed hair  
 Presentation: 50 ml. vial  units. (Ref.: 00168205)

SILICONE  
FREE

### Benefits

New concept in hair elixirs, with a lighter, silicone-free formula, designed for lifeless, stressed hair with specific density needs.

Its exclusive formula makes your hair:

INSTANTLY SHINY

2 TIMES STRONGER\*

2 TIMES DENSER\*

Hair becomes stronger, more flexible and completely revitalized.

\*Comparative test vs. treatment with no specific formula.

### Luxurious ingredients

**DIAMOND**; diamond powder will make your hair shinier than you've ever imagined. Instant effect.

**ABYSSINIAN OIL**: Extracted from the seeds of the Cambre abyssinica plant, it fights against the main signs of aging in the hair, strengthening the fibre and boosting hair density and elasticity.

### How to use:

Spray MYSTIC DIAMOND elixir once into the palm of your hand. Rub the product together between your hands and apply to the mid-sections and ends of damp hair. Repeat the process, if necessary.



Shake well before using.  
Do not use on dry hair.



First apply in the palm of your hand to spread it evenly;  
do not apply directly to the hair.

HAIR TREATMENTS

# Capilo

## Latest generation of treatments

NO SULPHATES,  
SILICONES,  
PARABENS AND  
ALLERGENS

### The treatment your hair needs

Three-step treatment that starts in the salon and finishes at home.

#### 1. INITIAL DIAGNOSIS



Examination of the overall health of the hair.

Treatment diagnosis and management software.

Analysis with a micro-camera to check the condition of the scalp and verify the diagnosis.



#### 2. SCALP PREPARATION



PRE-TREATMENT : Technikum  
(only in authorized salons)

#### Technikum

Preparation ritual for treatment application. Formulated with Aloe Vera and Cool3D, which purify the scalp and hair. With heat/cold action to activate the blood flow.

#### MAIN ACTION

Purifying treatment for the scalp and hair.

#### BENEFITS

A 3D level of action: cold-hot-purifying action that promotes the activation of blood circulation. Prepares the scalp, greatly boosting the effectiveness of CAPILO treatments. Great feeling of freshness and comfort.

Active ingredients / formula: Aloe Vera

Technology: Cool3D

Technikum Shampoo #01 (pre-treatment shampoo) 500 ml. 12 (0408601)

Technikum Purifier #41 (pre-treatment clay) 450 ml. 12 (0408641)

3. TREATMENTS

**ENERGIKUM**



Progressive hair loss:  
Shampoo #2  
Peeling #21  
Lotion #31



Temporary hair loss:  
Shampoo #3  
Peeling #21  
Lotion #32

**PROGRESSIVE HAIR LOSS**  
LONG-LASTING AND PERSISTENT

Recommended for the treatment of conditions of persistent long-term hair loss.

**BENEFITS**

Strengthens and redensifies the hair mass.  
Stops hair loss.  
Speeds up hair growth.  
Prolongs the life of the hair.



**TEMPORARY HAIR LOSS**  
MILD AND SPORADIC

Recommended for the treatment of temporary or persistent cases of mild hair loss.

**BENEFITS**

Strengthens and redensifies the hair mass.  
Stops hair loss.  
Tones the scalp.  
Revitalizes the hair structure

Peeling Energikum #21 (peeling for progressive / temporary hair loss) 75 ml. 24 (00408621)  
Shampoo Energikum #02 (shampoo for progressive hair loss) 250 ml. 24 (00408641)  
Aqua-infusion Energikum #31 (lotion for progressive hair loss) box of 10 - 7 ml lotions. 12 (00408631)  
Shampoo Energikum #03 (shampoo for temporary hair loss) 250 ml. 12 (00408603)  
Aqua-infusion Energikum #32 (lotion for temporary hair loss) box of 10 - 7 ml lotions. 12 (00408632)

**VITALIKUM**



Oily hair loss:  
Shampoo #4  
Peeling #22  
Lotion #33



Hair Loss caused by  
oily dandruff.  
Shampoo #5  
Peeling #22  
Lotion #33

**OILY HAIR LOSS**  
HAIR LOSS CAUSED BY THE OVERPRODUCTION OF OIL

Recommended for the treatment of hair loss related to the overproduction of oil.

**BENEFITS**

Intensely regulates the overproduction of oil.  
Stops hair loss.  
Strengthens the scalp and thickens the hair.  
Makes the hair shiny and flexible.

**OILY DANDRUFF & HAIR LOSS**  
HAIR LOSS COMBINED WITH OILY SCALP AND DANDRUFF

Indicated for the treatment of hair loss, combined with an oily scalp and dandruff.

**BENEFITS**

Extra intensive hygienic action  
Eliminates dandruff  
Stops hair loss  
Revitalizes the hair structure

Peeling Energikum #21 Peeling Vitalikum #22 (peeling for oily hair loss / hair loss and oily dandruff) 24 (00408622)  
Shampoo Vitalikum #04 (shampoo for oily hair loss) 250 ml. 24 (00408604)  
Shampoo Vitalikum #05 (shampoo for hair loss and oily dandruff) 250 ml. 24 (00408605)  
Aqua-infusion Vitalikum #33 (lotion for oily hair loss / hair loss and oily dandruff) 12 box of 10 - 7 ml lotions 12 (00408633)

## EKILIBRIUM



Oily hair:  
Shampoo #8  
Peeling #24  
Lotion #36



Oily and dry hair:  
Shampoo #9  
Peeling #24  
Lotion #36

### OIL OILY SCALP

Recommended for the treatment of conditions characterized by the overproduction of oil.

#### BENEFITS

Great sebum-regulating action.  
Acts by balancing the pH and regulating excess sebum.  
Provide nutrients to strengthen the hair.  
Powerful disinfectant and soothing action.

Peeling Ekilibrium #24 (peeling for oily hair / oily and dry hair) 75 ml. 24 (00408624)  
Shampoo Ekilibrium #08 (oily hair shampoo) 250 ml. 24 (00408608)  
Shampoo Ekilibrium #09 (shampoo for oily hair and dry hair) 250 ml. 24 (00408609)  
Aqua-infusion Ekilibrium #36 shampoo for oily dandruff) box of 10 - 7 ml lotions. 12 (00408636)

### OIL AND DRY HAIR OILY SCALP AND DRY HAIR

Recommended for the treatment of scalps afflicted by the overproduction of oil and dry hair.

#### BENEFITS

Reactivates the pH balance and cellular function.  
Purifies and frees the scalp of excess sebum.  
Double regulating and moisturizing action.  
Great feeling of freshness

## OXYGENUM



Dry dandruff:  
Shampoo #06  
Peeling #23  
Lotion #34



Oily dandruff:  
Shampoo #07  
Peeling #23  
Lotion #35

### DRY DANDRUFF DANDRUFF AND SCALING CONDITIONS

Recommended for the treatment of dandruff and peeling.

#### BENEFITS

Purifies the scalp and hair.  
Strengthens the scalp's natural defences.  
Eliminates dandruff and regulates the sebaceous glands.  
Moisturizes the scalp and hair, giving it shine.

Peeling Oxygenum #23 (peeling for dry dandruff / oily dandruff) 75 ml. 24 (00408623)  
Shampoo Oxygenum #06 (shampoo for dry dandruff) 250 ml. 24 (00408606)  
Aqua-infusion Oxygenum #34 (lotion for dry dandruff) box of 10 - 7 ml lotions 24 (00408634)  
Shampoo Oxygenum #07 (lotion for oily hair loss / hair loss and oily dandruff) 250 ml. 24 (00408607)  
Aqua-infusion Oxygenum #35 (lotion for oily dandruff) box of 10 - 7 ml lotions 24 (00408635)

### OILY DANDRUFF DANDRUFF CAUSED BY THE OVERPRODUCTION OF OIL

Recommended for the treatment of dandruff conditions caused by the overproduction of oil.

#### BENEFITS

Great purifying and balancing action.  
Oxygenates the epidermis cells.  
Its astringent action regulates the oil with a soothing effect.  
Provides shine and extreme softness for the hair.

## HOW TO APPLY CAPILO TREATMENTS:



1. Apply the peeling.



2. Rinse.



3. Wash the hair with the shampoo.



4. Gently towel dry the hair.



5. Apply the lotion.



6. Massage.

Ultimate Organic Rescue

# HYDRA.IN

## High-quality cosmetics to the rescue of your hair

---

### Ultimate Organic Rescue

Line addressing specific hydration, nutrition and density needs for extreme hair rescue.

Its formulas are based on 7 precious organic oils taken directly from nature, whose properties have been known since ancient times for their terrific results:

Sesame / St. John's Wort / Jojoba / Linseed / Safflower / Baobab / Babassu

NO SULPHATES,  
ARTIFICIAL  
COLOURS,  
PARABENS OR  
ALLERGENS

### ALL HAIR TYPES

Capilo #10

Sesamum shampoo

EXTRA-GENTLE. pH NEUTRAL SHAMPOO.

Formulated with organic sesame seed oil.

Cleans, protects and conditions the hair and scalp.

500 ml. bottle 📦 Ref: 00408610

Capilo #42

Linum Leave-in

LIQUID MOISTURIZING CREAM. NO RINSE

Formulated with organic linseed oil.

Conditions and hydrates the hair, making it easier to style.

175 ml. tube 📦 Ref: 00408642

Capilo #49

Hypericum night caress

VITAMIN ENRICHED NIGHTTIME TREATMENT

Formulated with organic St. John's wort oil.

Revitalizes the hair from the roots to the ends.

125 ml. tube 📦 Ref: 00408649

SILICONE  
FREE



## OILY HAIR

Capilo # 8

Summum jojoba rain

**BALANCING AND MOISTURIZING TONIC. NO RINSE**

Formulated with organic Jojoba oil.

Sebum-regulating and moisturizing. Favors the action of nutrients on the hair root. Especially effective in cases of oily scalp and dry hair.

150 ml. bottle 📦4 Ref: 00408648



## FRAGILE, MATURE HAIR

Capilo #43

Carthamus densi-mousse

**FORTIFYING AND DENSIFYING MOUSSE**

Formulated with organic safflower oil.

Shapes, restructures and protects the hair, making it thicker. Does not weigh the hair down.

200 ml. bottle 📦4 Ref: 00408643

Capilo #44

Carthamus light cream

**LIGHT DENSIFYING CREAM**

Formulated with organic safflower oil.

Regenerates and redensifies fragile or thin hair.

175 ml. tube 📦4 Ref: 00408644



## DRY, DAMAGED HAIR

Capilo #45

Summum baobab mask

**INTENSIVE REGENERATING MASK. NO RINSE**

Formulated with organic baobab oil.

Strengthens the hair fibre and repairs the most damaged and dehydrated areas.

175 ml. tube 📦4 Ref: 00408645

Capilo #46

Summum baobab oil

**INTENSIVE REGENERATING ELIXIR. NO RINSE**

Formulated with organic baobab oil.

Instantly restructures and moisturizes the hair.

50 ml. bottle 📦4 Ref: 00408646

Capilo #47

Summum babassu serum

**ANTI-FRIZZ SERUM. HEAT ACTIVATED**

With organic babassu oil.

Creates a protective film and eliminates frizzy hair. Heat activated.

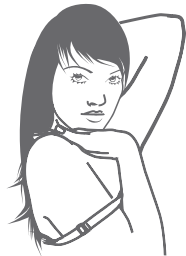
50 ml. bottle 📦4 Ref: 00408647

SILICONE  
FREE



HAIR TREATMENTS

# Ritualities



The first restorative treatment that balances the hair's protein load.

Active ingredients / formula  
Wheat germ, silk and keratin proteins

Product: Exclusive Salon and Home Maintenance Kit

## Exclusive Salon Pack Ref: 00169308 1



### Purifies

1. Protein shampoo // 500 ml.  
Moisturizing shampoo with proteins.  
Conditions and hydrates.  
Makes hair stronger, with more body.  
Restores hair while it nourishes.  
Gives hair a youthful-looking shine.



### Repairs

2. Moisturizing base // 30 ml.  
Hair moisturizing cream.  
Protects and repairs damaged hair.  
Restores weak, fragile hair, giving it strength, body and shine. Mix with the special booster fluid for an even stronger effect.



### Illuminates

3. Shine booster fluid // 30 ml.  
Shine- and moisture-boosting hair fluid.  
Superb moisturizing and conditioning properties.  
Concentrate with Proshine+ brings out the hair's natural shine.  
Controls and disciplines rebellious hair.  
Extraordinary softness for dry, rough hair.



## Home Maintenance Pack Ref: 00169306 12



1. Protein shampoo // 250 ml.  
Moisturizing shampoo with proteins  
Conditions and hydrates.  
Makes hair stronger, with more body.  
Restores hair while it nourishes.  
Gives hair a youthful-looking shine.



2. Intensive restructuring treatment // 250 ml.  
Intensive hair restructuring fluid  
Strengthens and hydrates the heart of the hair fibre and scalp.  
Stabilises the hair.  
Provides strong protection against thermal aggression.





STYLING

# Evajazz

---

Variety of formats and textures that will allow you to let loose your creativity.

STYLE AND  
PROFESSIONAL  
FINISH



Acts by incorporating humidity-fighting agents, creating a protective film on the hair, preventing frizzing and providing unequalled shine.



**Technilack** Technical hair spray  
Three levels of hold for different finishing styles. Precision and direction, with well-trained results and a free style. Residue-free shine and texture. Easily removed.  
Levels of hold: 1-2-3



**Ecolack** Non-aerosol hairspray  
Holds even the most elaborate of hairstyles without dampening the hair or making it sticky. Its innovative spray system helps hair dry faster, and provides even product distribution. Choose between three levels of hold for different styles. Levels of hold: 1-2-3



**Hair Gum** Solid paste effect  
Maximum hold in your creations; extreme, daring, unstructured hairstyles with the most powerful long-lasting hold. Matte effect, with a modern touch and a daring look.  
Level of hold: 3



**Power Style** Styling gel  
Extreme hold, shiny finishes. Give yourself control over hairstyles, giving maximum hold to even the most daring and modern looks. Achieve a wet effect. Level of hold: 3



**Termo Balsam** Balsamic protector  
Protects your hair from the direct aggressions of hair dryers and irons that tend to dry it out and make it brittle and fragile. It also conditions the hair, making it easier to detangle and then style. Level of hold: 0



**Rock Paste Styling paste**  
Maximum hold and elasticity to achieve the desired style. Take your styles to the extreme with rock paste. Formulated with bee's wax to achieve greater hold and protection. Non-greasy formula.  
Level of hold: 3



**Shape Up Gel**  
Firm-hold sculpting gel. Create your own style that is both expressive and structured. Ideal for long-lasting wet-look hairstyles. Hair displays an intense shine, with no greasy effect.  
Level of hold: 2



**Déjà Vu**  
Flexible fibrous paste  
Controls, holds and texturizes the hair without making it feel stiff. Makes your hair more flexible and soft to the touch, facilitating multiple changes in style. Level of hold: 1



**Casual Wax Texturizing wax**  
Create an infinite number of textures with greater freedom of movement. Get your desired results, but without the clumps. Does not weigh the hair down. Level of hold: 2



**Modelling Mousse**  
Volume and texture  
Volume and body. If you're looking for a precise and versatile product that provides texture, elasticity and resistance for fine hair, you've found it. The result is both natural and free.  
Level of hold: 2



**Energizing Mousse**  
Hold and strength  
Strong, vigorous, powerful and well-defined curls. Controls excess volume and provides the ideal shape for long, curly hair. Its perfect formula provides the ideal weight and texture for your hair. Level of hold: 3

Choose the degree of hold according your hairstyle:



Modelling Mousse (strong hold styling mousse) 12 (00120305)  
Energizing Mousse (extreme hold styling mousse) 12 (00120306)  
Technilack "1" (soft hold hairspray) 25 (00139000)  
Technilack "2" (soft hold hairspray) 25 (00139001)  
Technilack "3" (soft hold hairspray) 25 (00139002)  
Technilack "1" (soft hold hairspray) 750 ml. 12 (00139200)  
Technilack "2" (strong hold hairspray) 750 ml. 12 (00139200)  
Ecolack "1" (soft hold aerosol-free hairspray) 12 (0049304)  
Ecolack "2" (strong hold aerosol-free hairspray) 12 (0049302)

Ecolack "3" (extreme hold aerosol-free hairspray) 12 (0049303)  
Power Style (shiny effect styling gel) 12 (00145500)  
Hairgum (mate effect styling gel) 6 (00145501)  
Shape Up (styling gel) (00146103)  
Déjà Vu (fibrous, flexible paste) 6 (00146104)  
Casual Wax (texturizing wax) 6 (00146106)  
Rock Paste (styling paste) 6 (00146105)  
Termobalsam (heat protector / conditioner) 6 (00146100)

LARGE SIZE

# Hairnet

## Salon size at the best price

Complete line of ESSENTIAL products for the hair salon.  
Includes hygiene, care and developer products.

### Features .....

Active ingredients / formula

Wheat protein

Aloe Vera

Hamamelis

Product: Product line consisting of shampoo, mask, conditioner and developers.

Presentation: Several formats available.

### Ingredients .....

ALOE VERA: Drenches the hair in natural nutrients, minerals and vitamins that provide an intense level of nutrition. An excellent moisturizer, it has relaxing properties that eliminate hair stress.

HAMAMELIS: Provides vitamins, with a high flavonoid content, which strengthens its antioxidant properties, preventing the deterioration of the hair fibre and maintaining the natural structure of the hair.

WHEAT PROTEIN: Rich in iron, phosphorus, calcium, magnesium and vitamins B and E, it neutralizes the effects of free radicals, giving the hair the structure and strength it needs to ensure its well-being.





## HAIRNET SHAMPOO NEUTRAL SHAMPOO

A gentle shampoo, exclusively for professional use. Its neutral pH makes it ideal for use following chemical hair treatments. Its gentle formula guarantees hair care. It provides hygiene, softness, shine and movement.

Contains Aloe Vera and Hamamelis.

Hairnet Shampoo (professional shampoo) 5.000 ml. 3 - 5.000 ml. containers (Ref.: 00124200)

Hairnet Shampoo (professional shampoo) 1.500 ml. 4 - 1.500 ml. bottles (Ref.: 00124204)



## HAIRNET CONDITIONER CREAM RINSE

Conditioning cream rinse, suitable for all hair types. May be used daily as a softness-adding complement to shampoo. Its main function is to hydrate, nourish and repair the hair fibre.

Contains wheat protein.

Hairnet Conditioner (professional conditioner) 1.500 ml. 4 - 1.500 ml. bottles (Ref.: 00124201)



## HAIRNET MASK NOURISHING MASK

Nourishing mask with an instant regenerating effect. Specific treatment for especially porous and damaged hair. Its main function is to hydrate, nourish and repair the hair fibre.

Contains wheat protein.

Hairnet Mask (professional mask) 1.000 ml. 3 - 1.500 ml. jars (Ref.: 00124202)



## HAIRNET OXI CREAM DEVELOPER

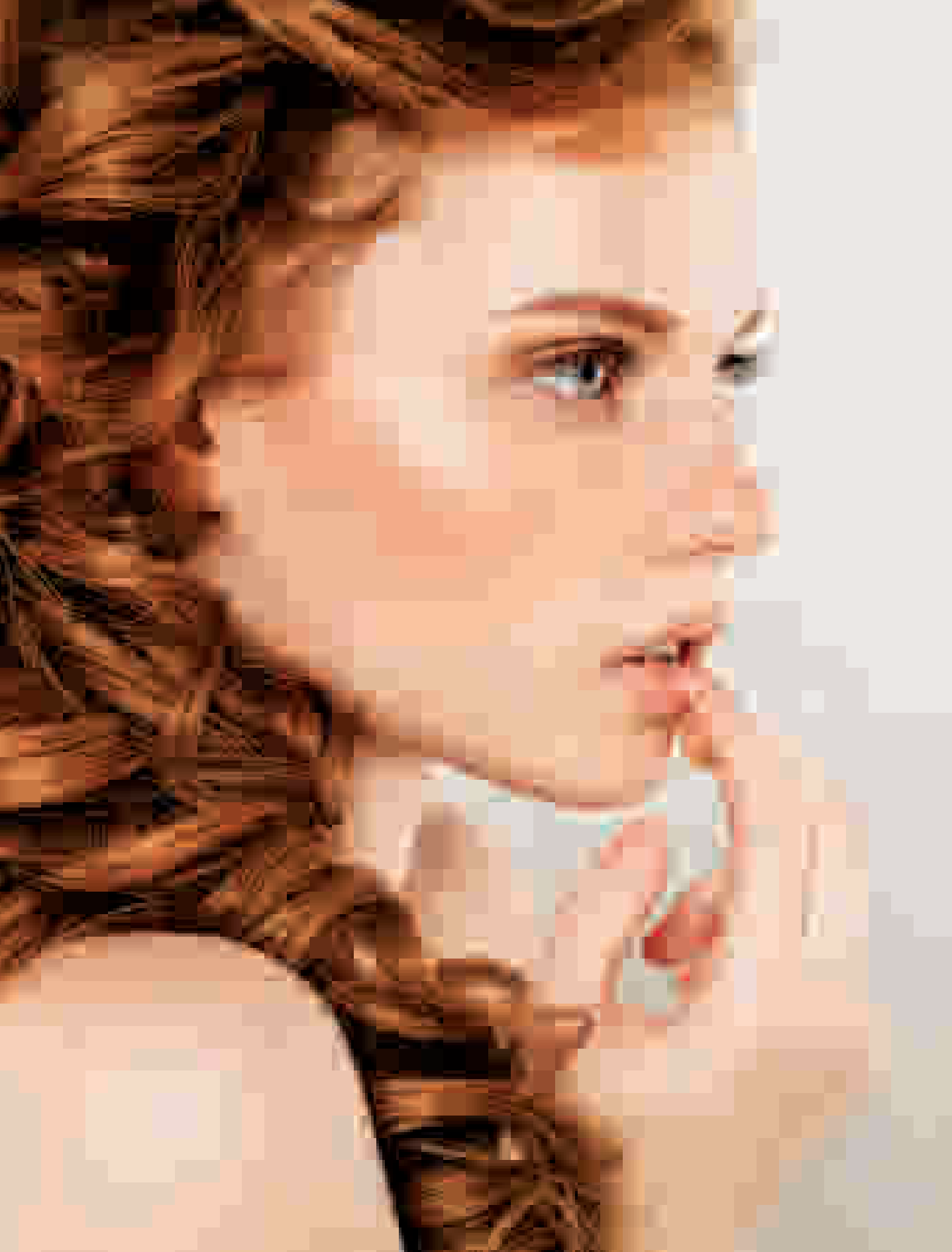
Ideal developer for any type of colour treatment. Soft, creamy consistency.

- Maximum respect for the hair.
- Even, shiny and long-lasting results.
- Hairnet Oxi 20, 30 and 40v.

Hairnet Oxi 20vol. / 6% (professional developer) 2.000 ml. 3 - 2.000 ml. containers (Ref.: 00124205)

Hairnet Oxi 30vol. / 9% (professional developer) 2.000 ml. 3 - 2.000 ml. containers (Ref.: 00124206)

Hairnet Oxi 40vol. / 12% (professional developer) 2.000 ml. 3 - 2.000 ml. containers (Ref.: 00124207)



Professional hair care products  
manufactured in Barcelona.

Since 1922.

*eva*

*eva*  
PROFESSIONAL  
HAIR CARE

[www.evaprofessional.com](http://www.evaprofessional.com)

Eva Española S.L. Ramon Farguell, 60 · 08243 Manresa · Spain · T. +34 93 874 85 86

#EvaProfessional #HairCare